



Maintaining existing ReportSmith connections

This appendix provides an overview of the data sources to which you can make a ReportSmith connection, as well as the three types of drivers ReportSmith uses to connect to those data sources: BDE, ODBC, and native connections.

Data sources

The first step in connecting to a database is to determine the type or format of the database. In turn, this will determine the connection types available to you when making your ReportSmith database connection.

Table A.1 shows database file types supported by ReportSmith. Refer to this table to determine which type of connection to use.

Table A.1: Supported database file types and versions

Database type	Connection type	Comments
Access	ODBC	ReportSmith does not supply the ODBC driver for Microsoft Access. This driver is automatically installed during Access installation.
dBASE	BDE, ODBC	
Excel	ODBC	The rs_sqlif.ini file needs to be modified to connect to Excel with Office 97. Please refer to “How do I...?” or type “Excel” in the Search text box at www.srs-inc.com for this information.
FoxPro	ODBC	
ORACLE	Native	
Paradox	BDE, ODBC	

Table A.1: Supported database file types and versions (continued)

Database type	Connection type	Comments
SQL Server	Native	
Sybase10	Native	Use the Sybase10 connection with Sybase11.
Text files	ODBC	

ReportSmith connects to many other databases via ODBC. If you do not see your database listed in the table above, you can call (978) 531-0905 and ask if your database is supported.

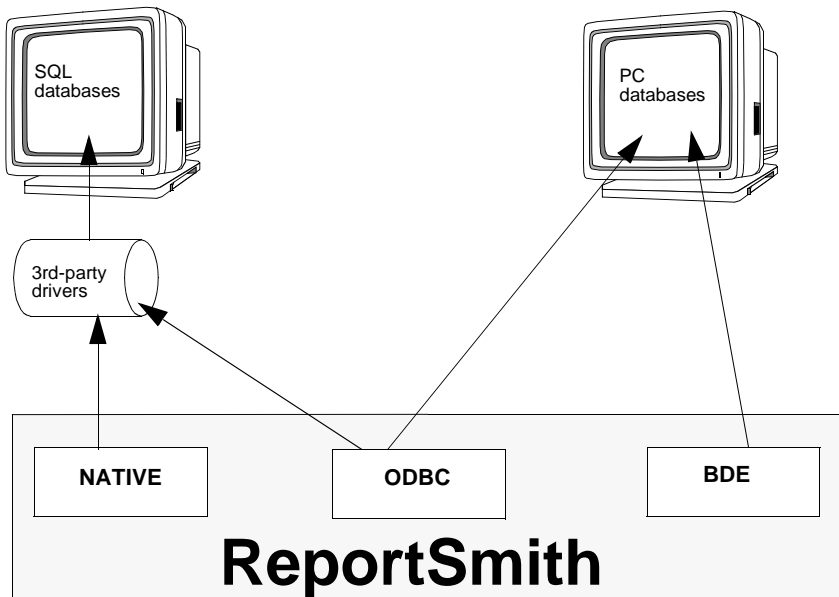
Connection types

ReportSmith connects to various databases by means of “middleware”—software that provides one or more of the following connection types:

- Borland Database Engine (BDE) connections enable you to connect to BDE-enabled products such as Paradox and dBASE.
- Open Database Connectivity (ODBC) connections enable you to connect to ODBC-compliant, PC-based or SQL data sources.
- Native Application Programming Interface (Native) connections enable you to connect to selected SQL data sources.

As shown earlier in Table A.1, the connection types available to you will depend on the format of the database to which you are connecting. Figure A.1 shows how ReportSmith uses these three connection types to communicate with various data types. Third-party middleware, such as Intersolv's ODBC drivers, can be purchased to allow ReportSmith to connect to additional data sources.

Figure A.1: ReportSmith database connections



BDE connections

The Borland Database Engine (BDE) enables you to connect to BDE-enabled desktop products such as Paradox and dBASE.

32-bit ODBC 2.0 connections

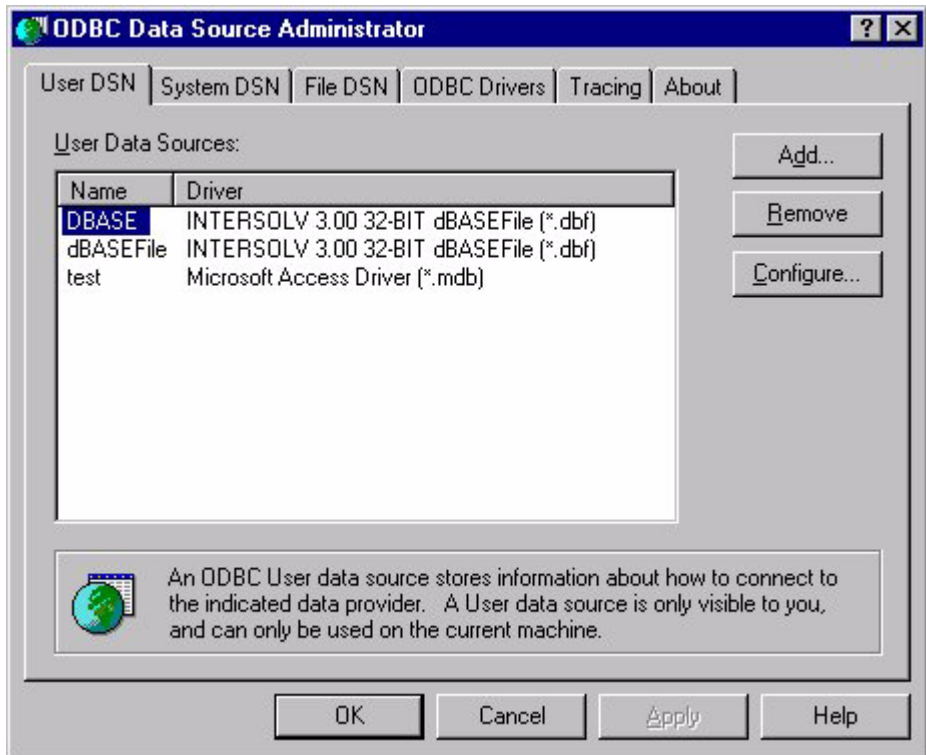
Open Database Connectivity (ODBC) drivers enable you to connect to PC and SQL ODBC data sources. You can install your own drivers—often supplied with the database application you are using.

Caution: You cannot use 16-bit ODBC 1.0 drivers with ReportSmith 3.0 and higher.

- To add, modify or delete ODBC drivers,
 - 1 Make sure you have installed the 32-bit ODBC Control Panel application for Windows 95 or Windows NT. *Do not use the ODBC Control Panel application for Windows 3.1 or the ODBC Administrator for Windows 3.0 or 3.0a.*
 - 2 Open the ODBC Control Panel application (or ODBC Administrator).
—or—
From ReportSmith, choose File|ODBC Setup.

The Data Sources dialog box appears, as in Figure A.2. (The particular drivers shown may vary depending on which drivers are installed on your system.)

Figure A.2: The Data Sources dialog box

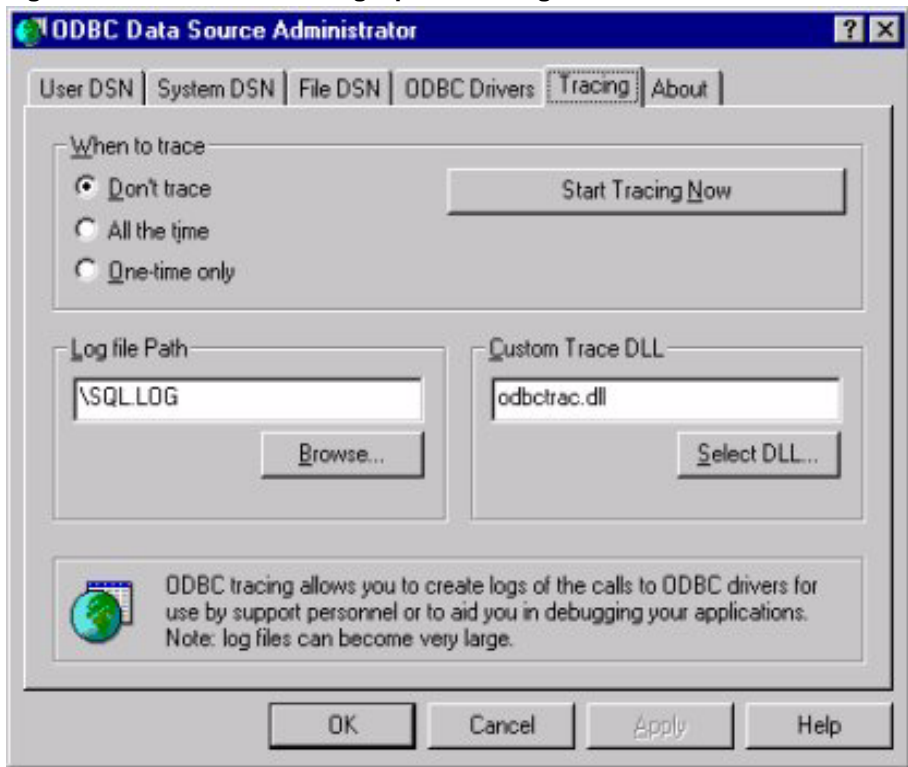


3 Choose one of the following options:

- Choose Remove to delete a selected ODBC data source. This does not erase the driver from your hard disk; it merely removes this data source from the list of installed ODBC data sources available to ReportSmith.
- Choose Add to add a data source to the list for ODBC drivers already installed on your hard disk. Then from the Create New Data Source dialog box, choose the new driver you want to add from the list box.

- 4 Choose the Tracing tab and set the ODBC tracing options for the ODBC drivers used by ReportSmith. (These options will also be in effect for any other ODBC-enabled application.)

Figure A.3: The ODBC Tracing Options dialog box



- 5 Choose OK to put your ODBC options into effect and to close the Data Sources dialog box.

For more information about ODBC connectivity, see the documentation for your particular database product.

Native API connections

A Native Application Programming Interface (API) connection is integrated into ReportSmith and enables you to connect to SQL data sources.

Tip: Because they are integrated within ReportSmith, native connections are able to retrieve data sets faster than other connection types. Therefore, you usually want to choose native connections before ODBC or BDE connections when connecting to a data source supporting Native API connections. (See Table A.1 on page 415.)

Connecting to ORACLE data sources

ReportSmith connects ORACLE data sources via SQL middleware. Although you can use an ORACLE ODBC driver with ReportSmith, this is not recommended because the native API connections prove much faster.

- To connect to a remote ORACLE data source,
 - 1 Ensure that you have an updated version of the proper SQL middleware — designed for use with Windows 95, Windows 98 or Windows NT — installed and properly configured. (See your ORACLE documentation or your system administrator for details.)
 - 2 In ReportSmith, choose File|Connections. ReportSmith displays the Connection dialog box.
 - 3 Select ORACLE from the Type drop-down list box, as shown in Figure A.4.

Figure A.4: Connection Dialog Box for Oracle Connection



- 4 Enter the server name, your user identification, and your password. Then choose OK to establish the connection.

Connecting to SQL Server/Sybase data sources

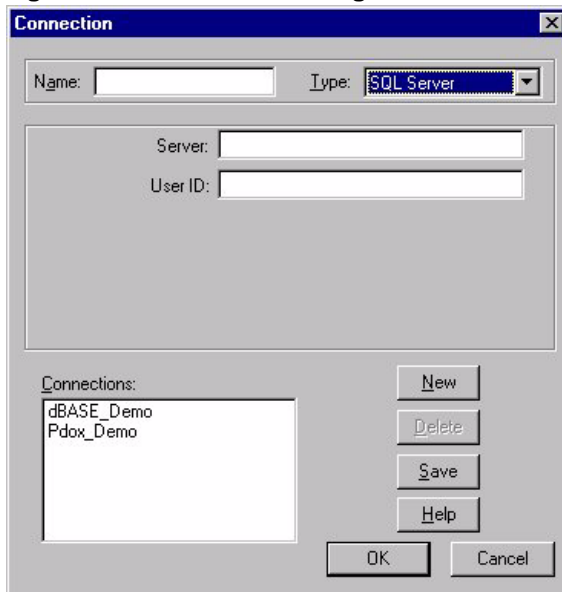
To access SQL Server/Sybase running on a LAN with an OS/2 server, you will need:

- Updated versions of appropriate SQL middleware. (Consult your SQL Server, Sybase documentation, or your system administrator.)

To access SQL Server/Sybase running under Unix, a DEC Vax, or Hewlett-Packard protocol, you need:

- An updated version of middleware using TCP/IP protocol, DECNet, or the appropriate files for your network protocol, as specified by your network administrator.
- To configure an SQL Server/Sybase Native API connection,
 - 1 From ReportSmith, choose File|Connections. ReportSmith displays the connection dialog box.
 - 2 Select SQL Server, Sybase, or Sybase 10, as appropriate, from the Type drop-down list box, as shown in Figure A.5.

Figure A.5: Connection Dialog Box for SQL Server Connection



- 3 Specify the appropriate server and your user identification, and then choose OK.

For detailed information on connecting to SQL Server or Sybase, see the documentation set for the data source application.

Creating and saving named connections

One of ReportSmith's greatest time- and labor-savers is the ability to create and save *named connections* containing login information or directory path information for frequently used connections. With named connections, you can:

- Save time by not having to retype database information that you use frequently.
- Shield end users from having to remember server names or data paths by setting up their connections for them.
- Ease sharing reports among multiple users by saving those reports with named connections.

Because a connection points to the location of files, a specific user, and the database tables you want to include in a report, you can set up permanent or temporary connections by telling ReportSmith the data path or server information for your system.

You can set up permanent connections to quickly access database tables that you use often. A user-defined *named connection* lets you access a database without having to re-enter the server name, user name, and directory path. Instead, you can select a named connection that you (or another user) have already defined, and ReportSmith will login to that database directly.

Important: Named connections are a convenience feature of ReportSmith; you do not need a named connection to connect to a table.

If required, ReportSmith prompts you to enter your password and connects you to the database. Once you create a connection and save it, the next time you access the database you created for that connection, you simply select the name you assigned to the connection, and ReportSmith makes the connection.

Note: See your system administrator for server IDs and help in setting up connections you plan to use frequently.

- To set up and save a connection,
 - 1 Choose File|Connections. ReportSmith displays the Connection dialog box appears, as in Figure A.6.

Figure A.6: Connection dialog box



- 2 Choose New to set up a new connection.
- 3 In the Name text box enter a name for the connection.
- 4 From the Type drop-down list box, select the database for which you want to set up a connection.

Note: Displayed options change for each type of connection.

- 5 Enter the appropriate information for your connection type. See your system administrator for information about a particular server.
- 6 Choose Save.
ReportSmith saves the connection and places it in the Connections box.
- 7 Choose OK.

You can now use this connection simply by selecting its name in the Connections box of the Select Table To Be Added dialog box, the next time you create a report.

- To delete a connection, select it in the Connections box and choose Delete. ReportSmith removes the connection.

